

Mid Atlantic Ag

Sample 598-051923-042

High Potency Hemp (THCa Dominant) - Gelato KY21\_2212

Batch/Lot # G.0523

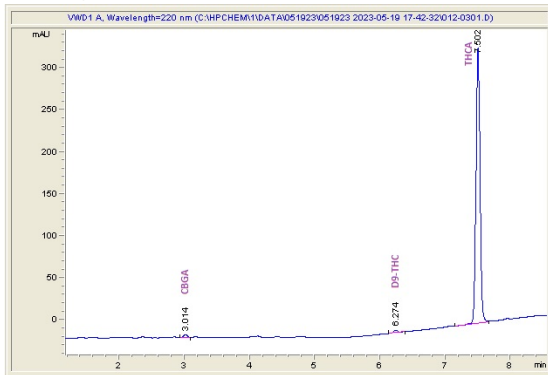
Sample Submitted: 05-19-2023; Report Date: 05-20-2023

High Potency Hemp (THCa Dominant) - Gelato  
KY21\_2212

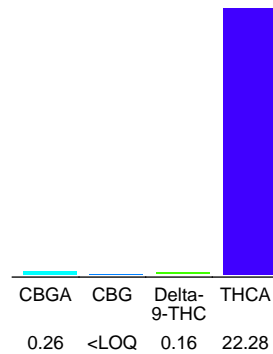
Plant Material: Flower

Batch/Lot # G.0523

Chromatogram



Cannabinoid Profile



Cannabinoid Profile by HPLC

**0.16%**  
Delta-9-THC

**0.00%**  
CBD

**22.70%**  
Total Cannabinoids

Cannabinoid	% wt	mg/g
CBGA	0.26	2.6
CBG	<LOQ	<LOQ
Delta-9-THC	0.16	1.6
THCA	22.28	222.8
<b>Total Cannabinoids</b>	<b>22.70</b>	<b>227.0</b>
<b>Calculated Total THC</b>	<b>19.70</b>	<b>197.00</b>
<b>Calculated CBD Yield</b>	<b>0.00</b>	<b>0.00</b>

Calculated Total THC = Delta-9-THC + 0.877 \* THCA  
Calculated Maximum CBD Yield = CBD + 0.877 \* CBDA

**Marin Analytics, LLC**  
250 Bel Marin Keys Blvd, Suite D4  
Novato, CA 94949  
833-321-TEST / info@marinanalytics.com

*Sara Biancalana*  
**Sara Biancalana**  
Chief Scientist

This sample has been tested by Marin Analytics, LLC using valid testing methodologies and a quality system. Values reported relate only to the sample tested. Marin Analytics, LLC makes no claims as to the efficacy, safety, or other risks associated with any detected or non-detected levels of any compounds reported herein. This Certificate shall not be reproduced except in full without the written approval of Marin Analytics, LLC. Copyright 2023 Marin Analytics, LLC All Rights Reserved.